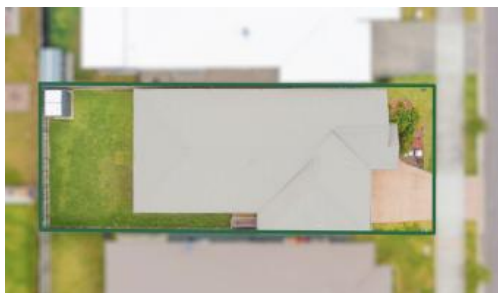


Leased



72 Norfolk Dr, Burpengary East



## QUALITY MODERN HOME

This Stunning 4 Bedroom Home ticks all the boxes.

Situated in the heart of North Harbour Estate Burpengary East this well presented home is in a quite street with nature walks and kids playgrounds close by.

Containing all the essentials with large open plan kitchen, Butlers Pantry and room for the whole family to relax and unwind after a busy day.

Featuring:

- Air-conditioned, open-plan kitchen and living area
- kitchen with gas cooktop, 900mm oven & walk in pantry
- Master bedroom with a walk in robe
- Ensuite features double vanity
- 3 other bedrooms, 2 with built-in robes
- Bathroom with feature bathtub
- Ceiling fans throughout

4 2 2

**Price** \$620 Per Week UNDER APPLICATION

**Property Type** Rental

**Property ID** 968

### AGENT DETAILS

Hallie Hill - 0417 819 911

### OFFICE DETAILS

Local Property Team  
1300 040 728

PROPERTY TEAM

- NBN Ready!
- Undercover patio
- Generous low maintenance fully fenced yard
- Double remote internal access garage

Do not delay this property will not last long.

TO ARRANGE AN INSPECTION CLICK THE "BOOK NOW BUTTON"  
OR CALL 0417 819 911

TO APPLY NOW CLICK THE "APPLY NOW" BUTTON ON THE LISTING  
ON REALESTATE.COM.AU

Disclaimer - While we have made every effort to ensure the accuracy of the information provided, we cannot be held responsible for any errors, omissions, or inaccuracies. It is the responsibility of prospective tenants to verify the information contained herein through their inquiries. We disclaim any and all liability in relation to any errors or inaccuracies.

*The above information provided has been furnished to us by the vendor/s. We have not verified whether or not that information is accurate and do not have any belief in one way or the other in its accuracy. We do not accept any responsibility to any person for its accuracy and do no more than pass it on. All interested parties should make and rely upon their own inquiries in order to determine whether or not this information is in fact accurate.*