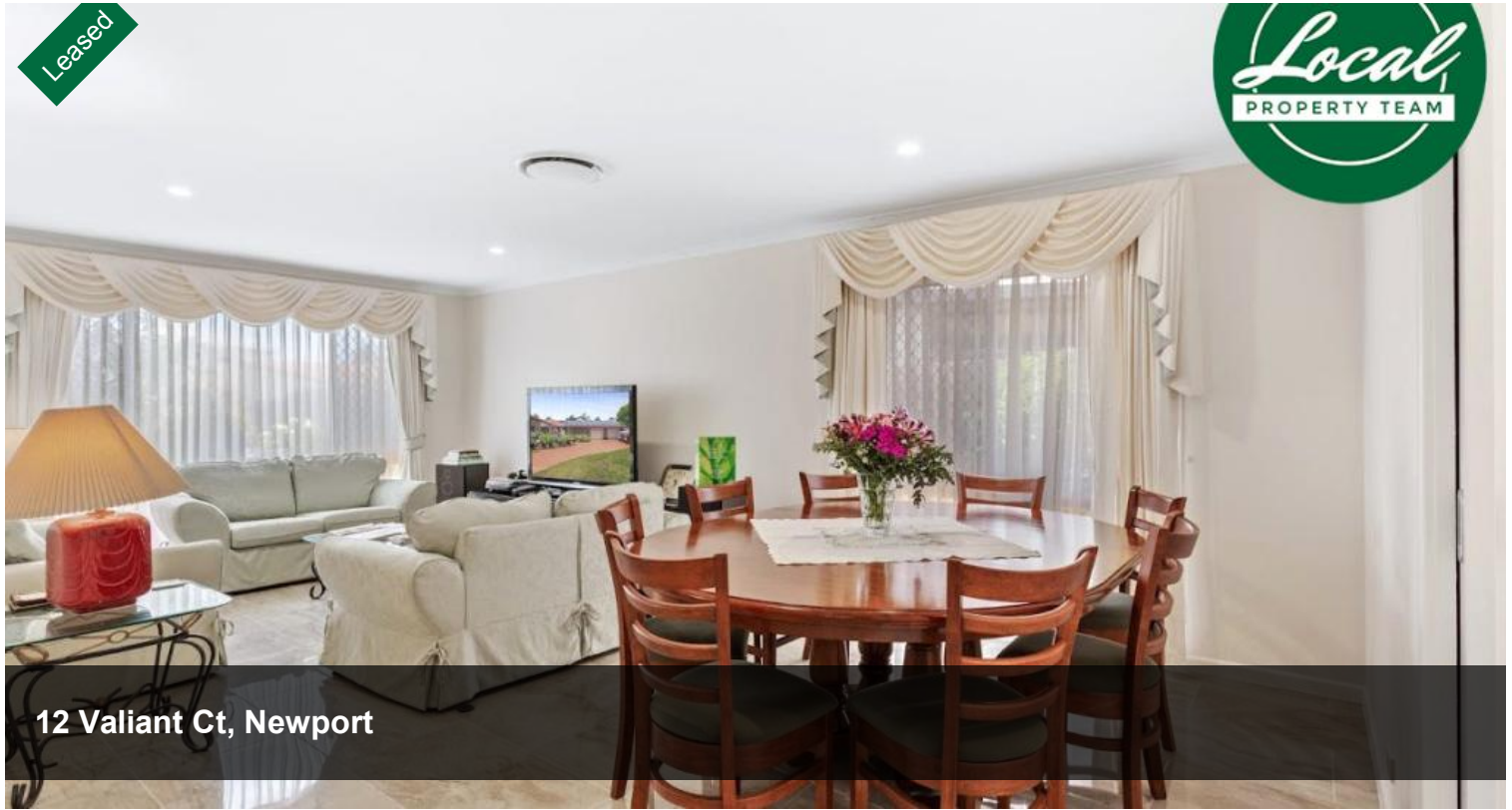


Leased



12 Valiant Ct, Newport



## GARDEN MAINTENANCE IN RENT & FREE ELECTRICITY WITH ALL THE SOLAR PANELS!!

This beautifully presented home is located in the sought after area of Newport and is only 150 meters from the waterfront!!

It offers the very best of luxury living with; Gourmet kitchen with large open plan living area, and the family area which seamlessly feeds through to a covered alfresco entertaining area for the whole family to enjoy all year round.

Situated in a private cul-de-sac in Newport - this beach lifestyle home is the perfect place to put your feet up!!

**Garden Maintenance included for FREE with the rent for the busy family ...**

This property is a must see and will not last long!!

Features include;

🛏 3 🚿 2 🚗 2

**Price** \$750.00 per week

**Property Type** Rental

**Property ID** 470

### AGENT DETAILS

Hallie Hill - 0417 819 911

### OFFICE DETAILS

Local Property Team

1300 040 728

PROPERTY TEAM

- \* HUGE master bedroom with en-suite, built in robes and extra space for an at home office
- \* Remaining two spacious bedrooms with built in robes at the end of the house for extra privacy
- \* Ducted air conditioning throughout the whole house for those hot summer months
- \* Two huge separate living areas leading out onto the fully covered alfresco area
- \* Open-plan contemporary kitchen with island bench, 5 burner gas cook top and plenty of cupboard and bench space
- \* Large quality main bathrooms with design fittings
- \* Large outdoor BBQ/entertainers area overlooking the landscaped back garden
- \* Beautiful maintained yard for the whole family to enjoy - especially those with a green thumb
- \* Double automatic garage with internal access
- \* 23 Solar panels (5,200watts) - **NO power bills!!**
- \* Two huge sheds, a greenhouse, chicken coup or bird aviary
- \* Pets on application

Come to discover what the locals have known for a long time - Newport is the heart of the Peninsula..

Located just 150 meters to the waterfront - you will enjoy the peacefulness of the location, yet the convenience of being minutes from the Houghton Highway to access the Airport or the Northern suburbs of Brisbane.

Click the BOOK INSPECTION button now to register to view the property at a time that suits you!

Disclaimer - We have in preparing this information used our best endeavours to ensure that the information contained herein is true and accurate but accept no responsibility and disclaim all liability in respect of any errors, omissions, inaccuracies or misstatements that may occur. Prospective purchasers should make their own enquiries to verify the information contained herein.es to verify the information contained herein.

*The above information provided has been furnished to us by the vendor/s. We have not verified whether or not that information is accurate and do not have any belief in one way or the other in its accuracy. We do not accept any responsibility to any person for its accuracy and do no more than pass it on. All interested parties should make and rely upon their own inquiries in order to determine whether or not this information is in fact accurate.*