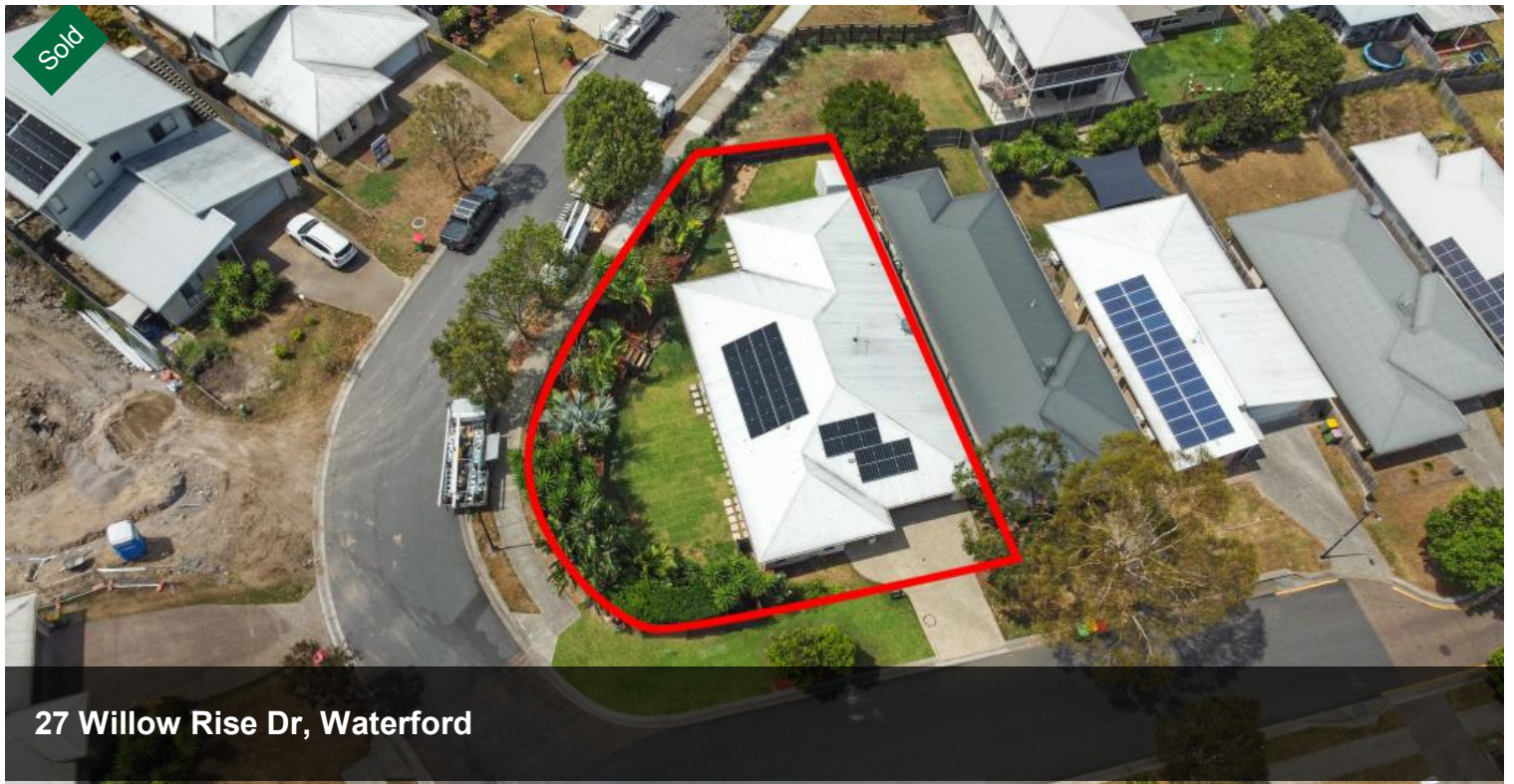


Sold



27 Willow Rise Dr, Waterford



MODERN FAMILY LIVING ON A SPACIOUS CORNER BLOCK

Discover the perfect family home in a peaceful and convenient location! This beautifully presented modern residence offers a generous floor plan, multiple living zones, and an inviting outdoor entertaining area all set on a 645m² corner block with established gardens

Property Features:

- Multiple living areas including formal lounge, family room, and a second living space ideal for growing families.
- Air conditioning to the master bedroom and lounge for year-round comfort.
- Stunning kitchen with 900mm freestanding stainless-steel cooker, big island bench and a walk-in pantry.
- Four spacious bedrooms including a private master suite.
- Large alfresco entertaining area with a timber deck perfect for weekend BBQs and family gatherings.
- Double lock-up garage with easy access.

🛏 4 🚿 2 🚿 2 📏 645m²

Price SOLD for
\$1,000,000

Property Type Residential

Property ID 1401

Land Area 645 m²

AGENT DETAILS

Brennan Hill - 0424 133 622

OFFICE DETAILS

Local Property Team
1300 040 728

PROPERTY TEAM

- Established gardens surrounding the home, creating a serene and leafy outlook.
- Set in a quiet street with a park just metres away.
- Swan security camera system
- Roller shades to the pergola area
- 6.6 KW solar
- Garden shed and 3000L water tank Irrigation system

Location Highlights:

- Family-friendly neighbourhood
- Close to schools, shops & transport
- Easy access to major motorways

This home truly ticks all the boxes space, style, comfort and lifestyle.

Don't miss your chance to secure a modern family home in sought-after Waterford.

Contact Brennan Hill now to arrange your viewing

The above information provided has been furnished to us by the vendor/s. We have not verified whether or not that information is accurate and do not have any belief in one way or the other in its accuracy. We do not accept any responsibility to any person for its accuracy and do no more than pass it on. All interested parties should make and rely upon their own inquiries in order to determine whether or not this information is in fact accurate.