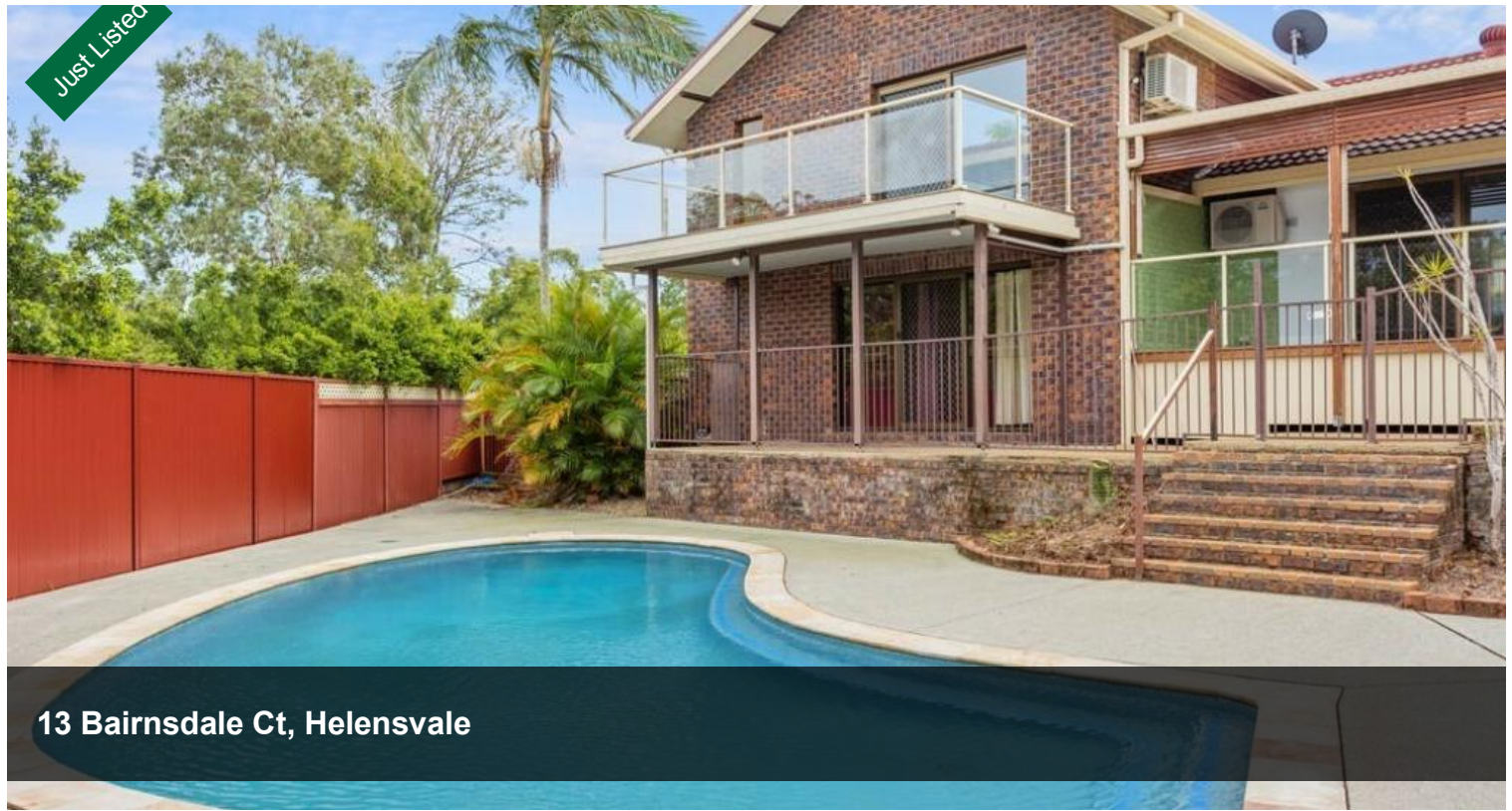


Just Listed



13 Bairnsdale Ct, Helensvale



SPACIOUS FIVE BEDROOM HOME WITH POOL

This split-level, north-facing home is perfect for large or extended families looking for comfort, space, and convenience. Ideally positioned in a quiet cul-de-sac, you'll be just 400m from Helensvale Shopping Centre and only 900m to Helensvale train and bus station – your transport hub to Brisbane, Southport, and Surfers Paradise.

Property Features:

- 5 spacious bedrooms with built-in robes (3 upstairs, 2 downstairs with separate living area)
- King-size master suite with two walk-in wardrobes and ensuite
- Newly renovated modern kitchen with stone benchtops and plenty of storage
- Multiple living zones – two separate living areas, rumpus room with fireplace, and wet bar downstairs
- Outdoor entertaining paradise – lagoon-style pool, Bali hut with built-in

🛏 5 🚿 2 🚗 4

Price \$1,500 per week

Property Type Rental

Property ID 1374

AGENT DETAILS

Brennan Hill - 0424 133 622

OFFICE DETAILS

Local Property Team

1300 040 728

PROPERTY TEAM

BBQ, and two large decks (one with windbreak blinds)

- Comfort all year round with 2 air-conditioners, soft new carpet, and elevated breezes
- Secure parking – double internal garage, additional 2-car shed, and a large carport for boat, caravan, or truck
- Security system with remote access
- Fully fenced backyard

Location Highlights:

- 400m to Westfield Helensvale (Woolworths, Coles, Aldi, Target, Kmart, and more)
- 900m to Helensvale train & bus station
- 1km to Helensvale State School
- 1.7km to Helensvale Golf Club
- 5 minutes to the M1 motorway (40 mins to Brisbane CBD, 15 mins to Southport)
- 5 minutes' drive to Movie World and theme parks

This is the ultimate family rental – space, lifestyle, and location all in one.

To submit a rental application, click the “Apply Now” button

To arrange a property inspection, please click the “Book Now” button or send a message

Disclaimer:

Every effort has been made to ensure the accuracy of the information provided in this advertisement. However, Local Property Team does not accept any liability for errors or omissions.

All details are considered to be correct at the time of publication.

Prospective tenants are advised to verify any specific requirements such as internet connectivity (e.g., NBN availability) with relevant service providers prior to submitting an application.

The above information provided has been furnished to us by the vendor/s. We have not verified whether or not that information is accurate and do not have any belief in one way or the other in its accuracy. We do not accept any responsibility to any person for its accuracy and do no more than pass it on. All interested parties should make and rely upon their own inquiries in order to determine whether or not this information is in fact accurate.