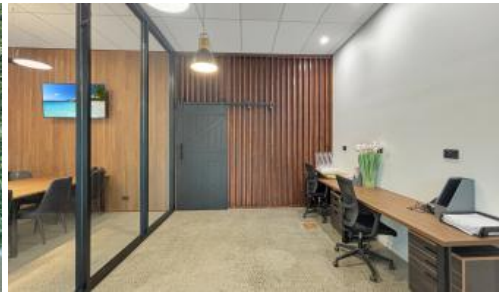




2, 9 John Lund Drive, Hope Island



AFFORDABLE EXECUTIVE OFFICE

Looking for the perfect office space to suit your executive needs? Look no further than our premier, fitted out office suite at Hope Harbour Marina, Hope Island!

This executive office is the perfect solution for professionals looking for a convenient and hassle-free workspace. With 24/7 access, you can work on your own schedule, plus, with the prime location at Hope Harbour Marina, you'll have easy access to all the amenities you need, including cafes and plenty of parking.

What you get

- Built in workstation desks and stylish reception desk
- Executive board room that seats 9
- 24 hour access
- Plenty of car parking
- Total size of 100m2 divided into two 50m2 zones, giving you the option to expand as your business grows (The second zone which has a separate private entrance is currently sublet for \$1,600 per month)

Price	Contact Agent
Property Type	Commercial
Property ID	1310
Office Area	100 m2

AGENT DETAILS

Brennan Hill - 0424 133 622

OFFICE DETAILS

Local Property Team
1300 040 728

PROPERTY TEAM

The board room is the perfect place to hold meetings with clients, colleagues or partners and to make a great impression and get the job done correctly.

Don't settle for less than the best when it comes to your workspace.

Contact us today to schedule a tour and see for yourself!

The above information provided has been furnished to us by the vendor/s. We have not verified whether or not that information is accurate and do not have any belief in one way or the other in its accuracy. We do not accept any responsibility to any person for its accuracy and do no more than pass it on. All interested parties should make and rely upon their own inquiries in order to determine whether or not this information is in fact accurate.